



SaniDry™ XP

Extra Performance

Basement Air ≈ System

High-Performance Dehumidification & Air Filtration

Eliminates damp, musty odors in your basement or crawl space by drying and filtering the air!

SaniDry™ XP Basement Air System is a powerful and effective dehumidifier that is big enough to do the job. It will dry the air and automatically drain the water out of a hose, so you never have to empty it like a conventional dehumidifier. The SaniDry™ XP will take ten times the amount of water out of the air as a typical dehumidifier, yet it uses the same energy.

If your basement is finished, the SaniDry™ XP can be located in the unfinished area and ducted to the finished area.



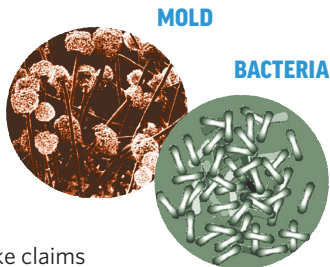
The upright SaniDry™ XP model is powerful, efficient, and fully ductable. Great for basements or crawl spaces over 40" high.

Why are Basements & Crawl Spaces Damp & Musty?

THE PROBLEM

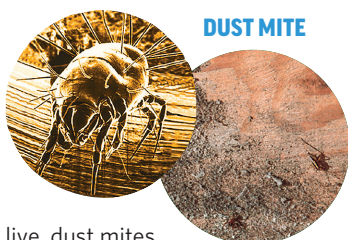
Mold

Mold is a growing concern and basements and crawl spaces are great places for mold to grow. Mold and mildew are musty smelling fungi that thrive in moist conditions. We cannot make claims about mold before or after the SaniDry™ XP is installed, but one thing is for sure: keeping humidity down reduces the chances for mold to grow. In general, mold will not grow at less than 55% relative humidity! SaniDry™ XP will keep your basement below 55% relative humidity! Of course, any groundwater, plumbing or other leaks should be fixed as part of a strategy to eliminate mold.



Allergens

Mold spores will certainly irritate someone with allergies. The number one allergen, however, is the fecal matter of dust mites. Dust mites don't drink water, but absorb it out of the air. In order to live, dust mites need relative humidity over 60%. The SaniDry™ XP unit will reduce the relative humidity below 60% and dust mites will die off.



What's Downstairs ... is Upstairs!

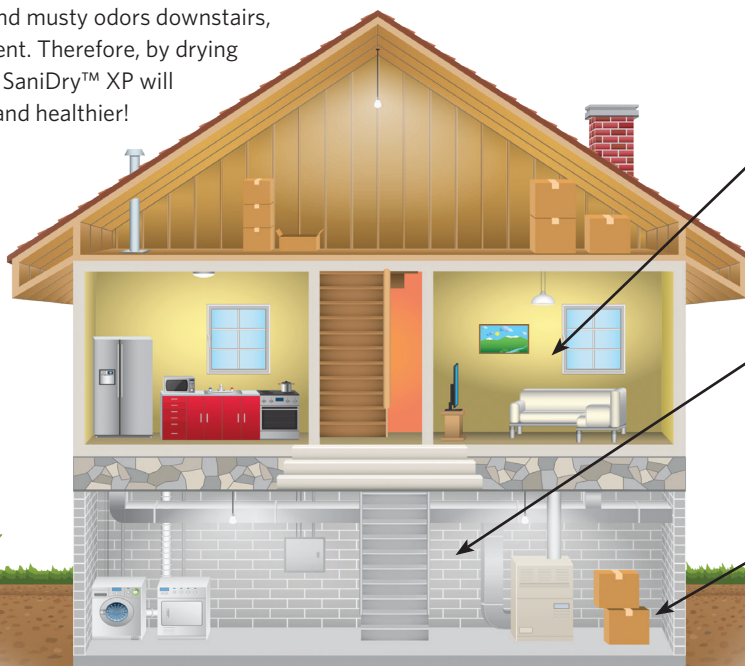
The basement or crawl space is part of the inside of a building as a whole. If there is high humidity and musty odors downstairs, it will affect the upstairs environment. Therefore, by drying your basement or crawl space, the SaniDry™ XP will help your whole house to be drier and healthier!

OUTDOOR CONDITIONS

Temp: 83° F.
Relative Humidity: 50%
Specific Humidity: .012 lbs.
Dew Point: 62° F.

GROUND CONDITIONS

Temp: 54° F.



LIVING AREA CONDITIONS

Temp: 77° F.
Relative Humidity: 60%
Specific Humidity: .012 lbs.
Dew Point: 62° F.

BASEMENT CONDITIONS

Temp: 67° F.
Relative Humidity: 81%
Specific Humidity: .012 lbs.
Dew Point: 62° F.

"MICRO-ENVIRONMENT"

(Conditions under carpets & boxes)
Temp: 62° F.
Relative Humidity: 100%
Specific Humidity: .012 lbs.
Dew Point: 62° F.

THE SOLUTION

Wring the Moisture Out of the Air

SaniDry™ Basement Air Systems have 10 times the cold surface area of an average dehumidifier and a very unique heat exchange core. This makes it ultra efficient! In fact, the SaniDry™ XP can remove ten times the water out of the air, while only using the same 6.75 Amps of energy as a household dehumidifier.

Filter the Air

The SaniDry™ XP has a two-stage filter system to keep the air clean. A prefilter for large dust particles can be rinsed clean as needed, and a second, easy to replace, slide-in filter, takes out particles as small as two microns.

